



TM

VITAL

Electrocomp



Google Us : Vital Connectors

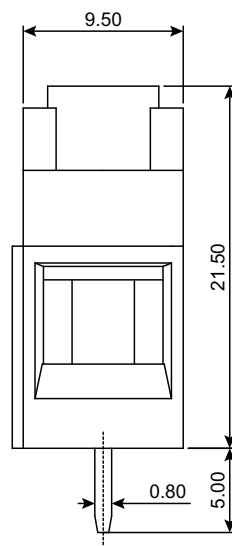
Manufacturer of PCB Terminal Blocks, Fuse Holders, Barrier Terminals, & Switches

Series 950S

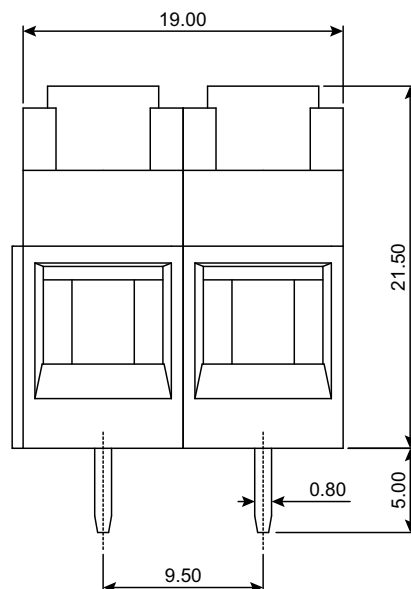
Screw Type(Cage-Clamp Design) Connectors



950S/1

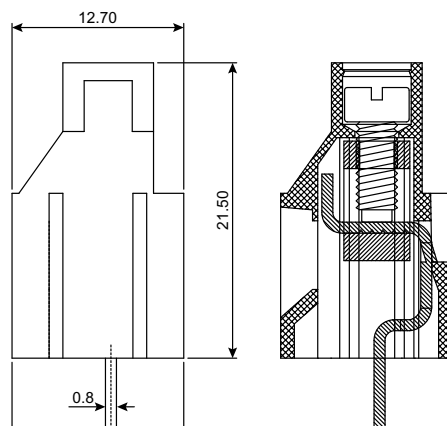


950S/2



TECHNICAL SPECIFICATIONS :

Pitch	: 9.50 mm
Nominal Rating	: 28A/600V
Dielectric Strength	: >2 kV
Moulded Material	: PA66 - UL94 V0 or V2
Insulation Resistance	: >1000 M Ω @ 500 Vdc
Terminal	: Tin Plated Copper Alloy
Wire Cage	: Nickel Plated Brass
Screw	: M3 x 0.50 mm
	: Brass Nickel Plated Suffix "P"
	: MS Trivalent Zinc Plated Suffix :C"
Wire Size	: 4.00 mm ²
Maximum Torque	: 0.60 - 0.65 Nm



ORDERING CODE

Series	Poles	Grade
--------	-------	-------

950S P

Number of Poles: 2 or 3

Grade: P or C

P= Professional Grade

C= Economy Grade

Approval Data

CE :600V / 28A / 26-10 AWG

Off/Works: 830/2, GIDC Estate, Makarpura, Vadodara- 390010

Office: +91 - 9227979802 / 4

Sales: +91-9227979801

Email: sales@vitalelectrocomp.com

Web: www.vitalelectrocomp.com

Note: Technical specifications are subject to change without prior notice

Copyright© 2024 by Vital Electrocomp. All Rights Reserved