



TM

VITAL

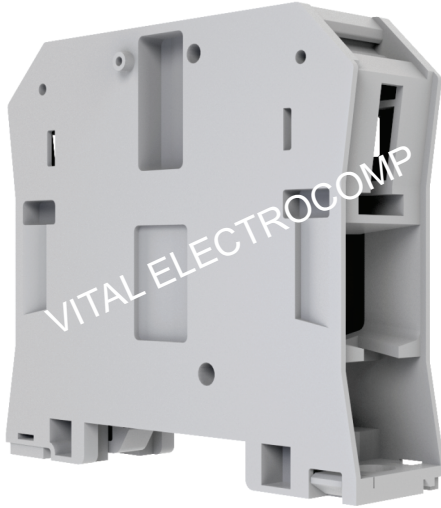
Electrocomp



Google Us : Vital Connectors

Manufacturer of PCB Terminal Blocks, Fuse Holders, Barrier Terminals, & Switches

RM50/70U



Vital make RM50/70U is a screw driver operated Feed-Through terminal block. Its specially designed foot enables easy mounting and removal from the stack with a screw driver. There is a slot on the terminals to hold markers for identification. Cross connection can be achieved by shorting links. These terminals are ideal for automation, instrumentation, power and control applications.

PRODUCT INFORMATION :

Product name:	RM50/70U
Connection method:	Feed through, screw connection type.
Rating:	192 A / 1000 V / 70.0 sq mm / 3 Nm
HSN number:	85369090
Standard packing quantity:	20 NOS
Country of origin:	INDIA
Screw thread:	M6

TECHNICAL DATA:

DIMENSIONS

Height:	70 mm	2.75 inch
Width:	77.3 mm	3.04 inch
Thickness:	20.3 mm	0.80 inch
Screw size:	M6	
Standard wire size:	70 sq mm	
Channel size:	DRC15, DRC35	

*Continue

Off/Works: 830/2, GIDC Estate, Makarpura, Vadodara- 390010

Office: +91 - 9227979802 / 4 | Sales: +91-9227979801

Email: sales@vitalelectrocomp.com | Web: www.vitalelectrocomp.com

Note: Technical specifications are subject to change without prior notice

Copyright© 2024 by Vital Electrocomp. All Rights Reserved



Manufacturer of PCB Terminal Blocks, Fuse Holders, Barrier Terminals, & Switches

RM50/70U

MATERIAL

Body material:	POLYAMIDE 66
Standard colour:	Grey
Colour options:	Red, Yellow, Blue, Black, Green, Charcoal

IEC RATING

Connection in acc with standard	IEC 60947-7-1
Nominal voltage	1000 V
Nominal current	192 A
Nominal cross section	70 sq mm
Short time current:	8.4 kA
Rated surge voltage:	8 kV
Degree of pollution:	3

Off/Works: 830/2, GIDC Estate, Makarpura, Vadodara- 390010

Office: +91 - 9227979802 / 4 | Sales: +91-9227979801

Email: sales@vitalelectrocomp.com | Web: www.vitalelectrocomp.com